

<ul style="list-style-type: none"> 138 kV Alternate Routes Existing Substation Scenic River Road Existing AEP Transmission Line (69 kV or lower) Existing AEP Transmission Line (115-230 kV) Existing AEP Transmission Line (345 kV +) County Boundary Stream (NHD) Lake/Pond (NHD) Reservoir (NHD) Floodplain 	<p>NLCD</p> <ul style="list-style-type: none"> Open Water Developed, Open Space Developed, Low Intensity Developed, Medium Intensity Developed, High Intensity Barren Land Deciduous Forest Evergreen Forest Mixed Forest Shrub/Scrub Herbaceous Hay/Pasture Cultivated Crops Woody Wetlands Emergent Herbaceous Wetlands
----------------------------------------------------------------------------------------------------------------------------------------------------------------------------------------------------------------------------------------------------------------------------------------------------------------------------------------------------------------------------------------------------------------------------------	-------------------------------------------------------------------------------------------------------------------------------------------------------------------------------------------------------------------------------------------------------------------------------------------------------------------------------------------------------------------------------------------------------------------------------------------------------------------------------

Amherst, Appomattox, Campbell, and Nelson Counties
Virginia

NAD 1983 HARN State Plane
Virginia South FIPS 4502 Feet
Lambert Conformal Conic

December 21, 2020

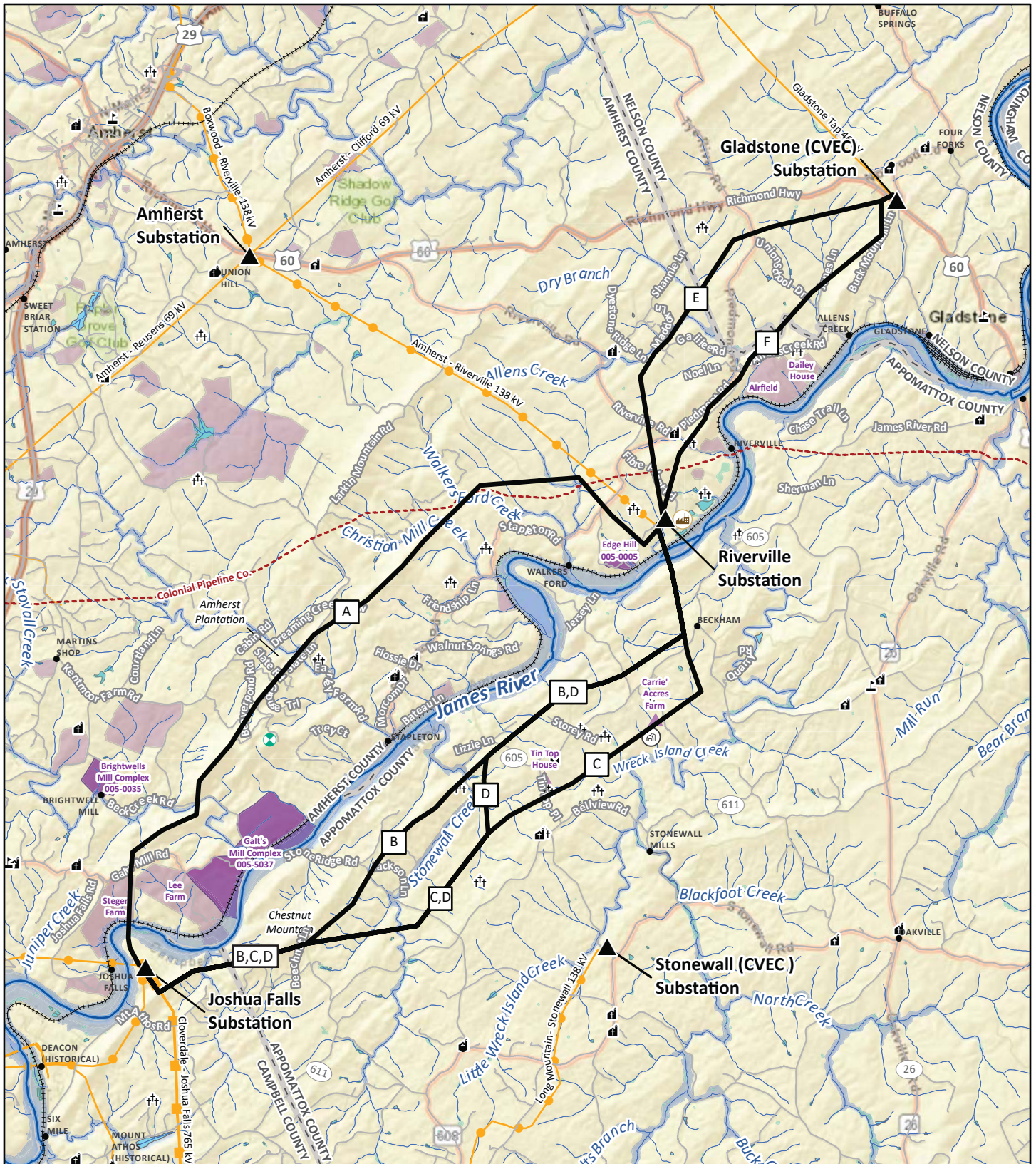
Component Location

Map 11
Land Use

Joshua Falls-Riverville-Gladstone 138 kV
Transmission Lines Component

Central Virginia Transmission Reliability Project

0 1 2
Miles



▲ Existing Substation	+++ Railroad
— 138 kV Alternate Routes	— James River
🏭 Grief Paper Mill	— Existing AEP Transmission Line (69 kV or lower)
▲ Unevaluated Architectural Sites (VDHR)	— Existing AEP Transmission Line (115-230 kV)
📶 Communication Tower	— Existing AEP Transmission Line (345 kV +)
● Populated Place	— County Boundary
🏠 Virginia Century Farm (VDACS)	— Stream (NHD)
🎓 School	— NWI Wetland
⛪ Place of Worship	— Lake/Pond (NHD)
⚰ Cemetery	— Reservoir (NHD)
— Road	— Floodplain
— Pipeline	— Unevaluated Architectural Site (VCRIS)
	— Architectural Resource (VCRIS)

Amherst, Appomattox,
Campbell, and Nelson Counties
Virginia

NAD 1983 HARN State Plane
Virginia South FIPS 4502 Feet
Lambert Conformal Conic

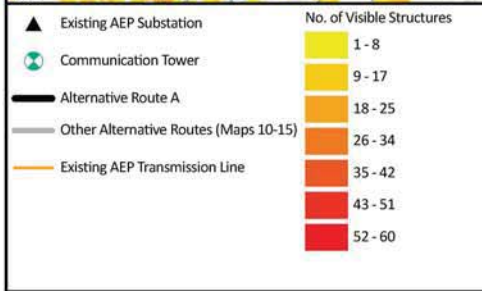
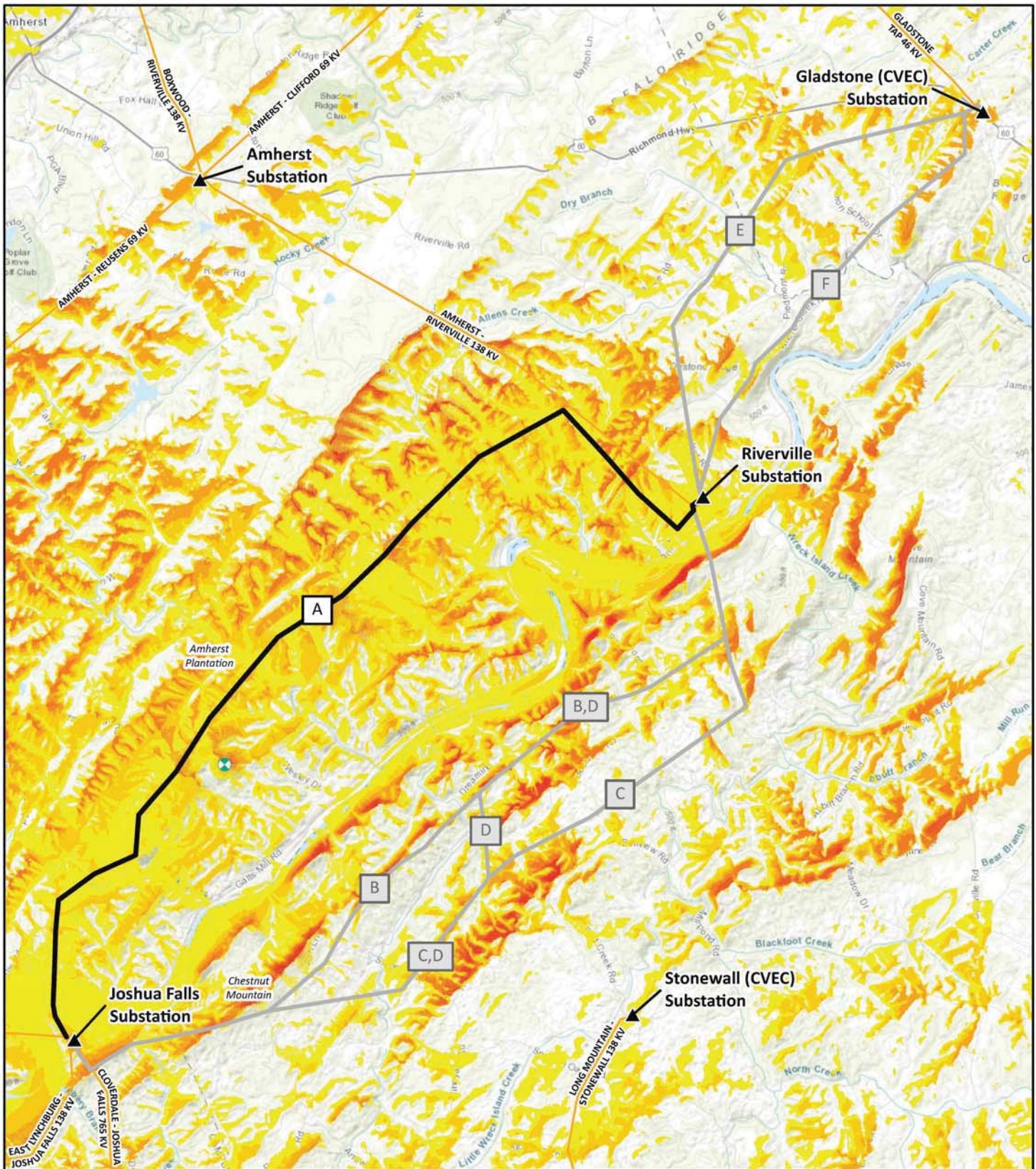
December 21, 2020

Component Location

Map 12
Cultural Resources
Joshua Falls-Riverville-Gladstone 138 kV
Transmission Lines Component

**Central Virginia Transmission
Reliability Project**

0 1 2
Miles



Amherst, Appomattox,
Campbell, and Nelson Counties
Virginia

NAD 1983 HARN State Plane
Virginia South FIPS 4502 Feet
Lambert Conformal Conic

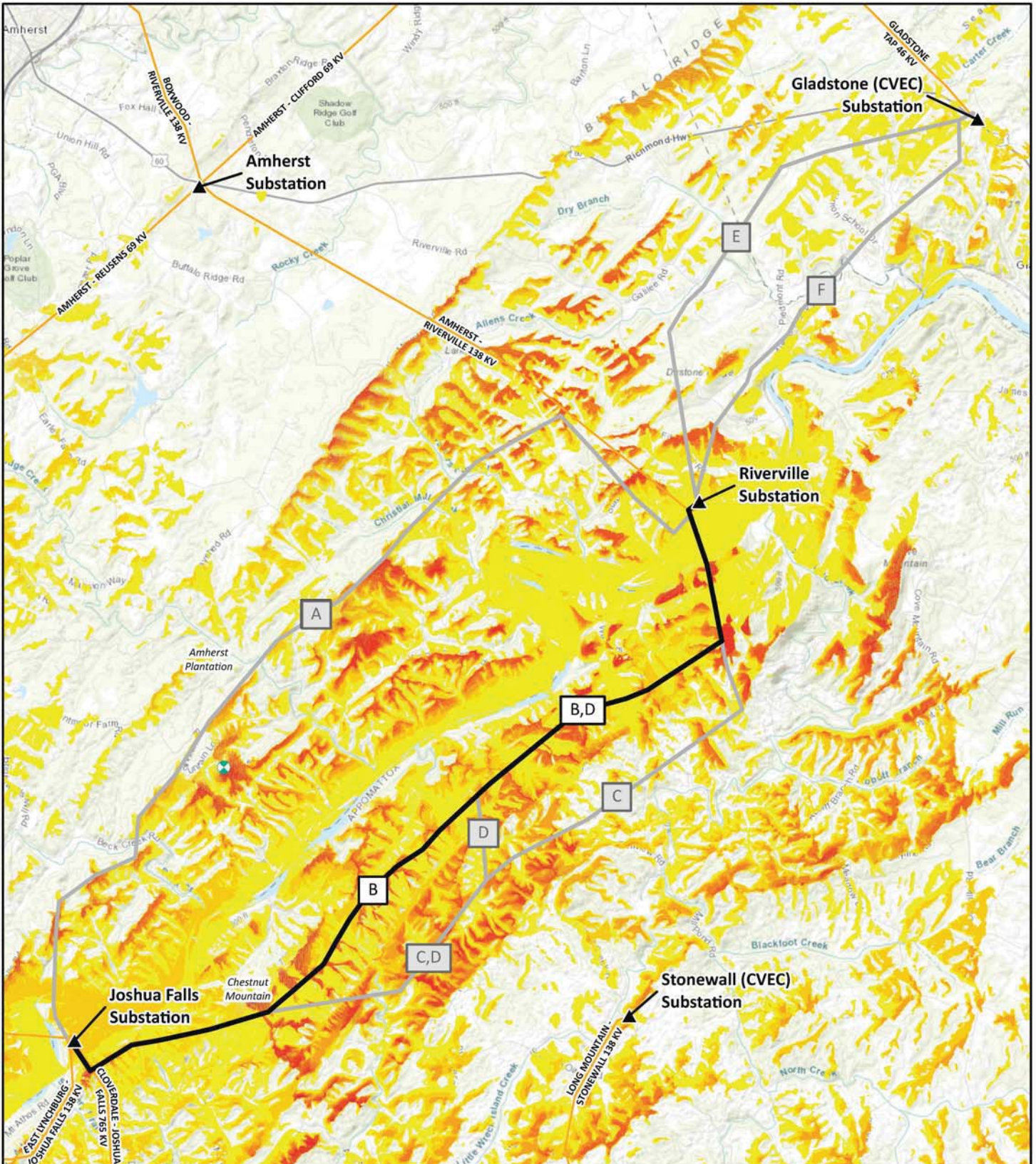
November 23, 2020



Map 13
Alternative Route A Viewshed
 Joshua Falls-Riverville-Gladstone 138 kV
 Transmission Line Component

Central Virginia Transmission Reliability Project

0 1 2
 Miles



▲ Existing AEP Substation

📶 Communication Tower

— Alternative Route B

— Other Alternative Routes (Maps 10-15)

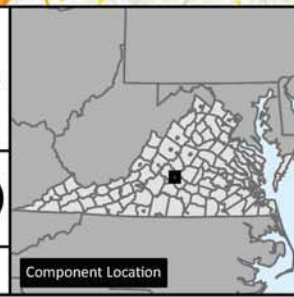
— Existing AEP Transmission Line

No. of visible structures	
1 - 8	Lightest Yellow
9 - 17	Yellow
18 - 25	Light Orange
26 - 34	Orange
35 - 42	Dark Orange
43 - 51	Red-Orange
52 - 60	Red

Amherst, Appomattox, Campbell, and Nelson Counties Virginia

NAD 1983 HARN State Plane Virginia South FIPS 4502 Feet Lambert Conformal Conic

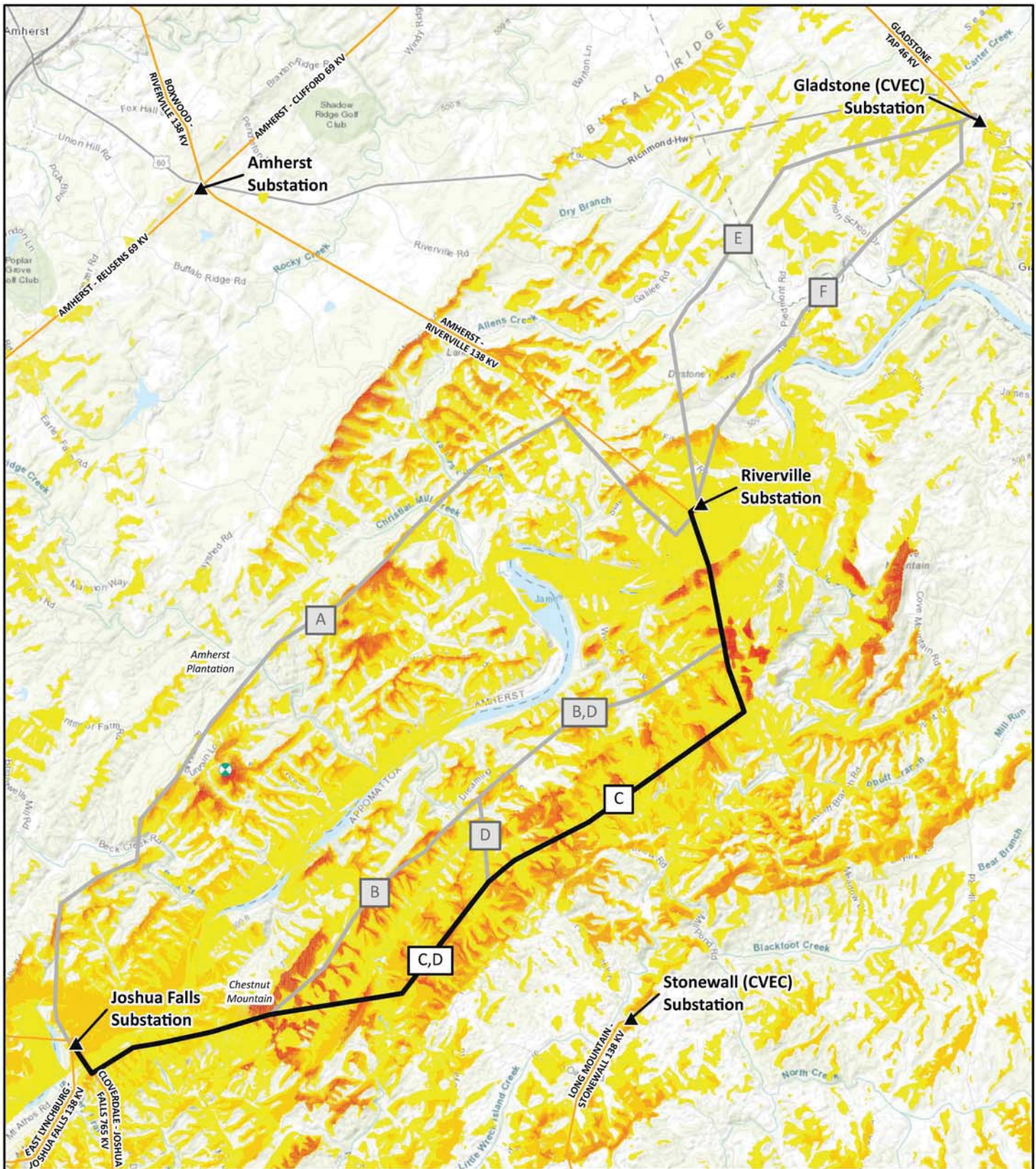
November 23, 2020



Map 14
Alternative Route B Viewshed
 Joshua Falls-Riverville-Gladstone 138 kV Transmission Line Component

APPALACHIAN POWER
 CENTRAL VIRGINIA TRANSMISSION RELIABILITY PROJECT

0 1 2 Miles



▲ Existing AEP Substation

📶 Communication Tower

— Alternative Route C

— Other Alternative Routes (Maps 10-15)

— Existing AEP Transmission Line

No. of visible structures	
1 - 8	Lightest Yellow
9 - 17	Yellow
18 - 26	Light Orange
27 - 35	Orange
36 - 44	Dark Orange
45 - 53	Red-Orange
54 - 62	Red

Amherst, Appomattox, Campbell, and Nelson Counties Virginia

NAD 1983 HARN State Plane Virginia South FIPS 4502 Feet Lambert Conformal Conic

November 23, 2020

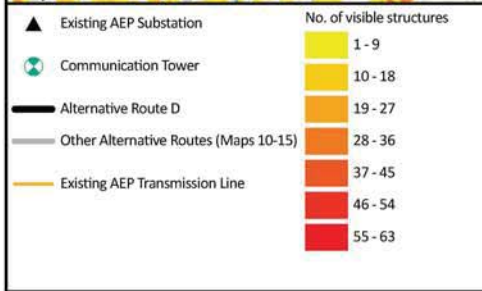
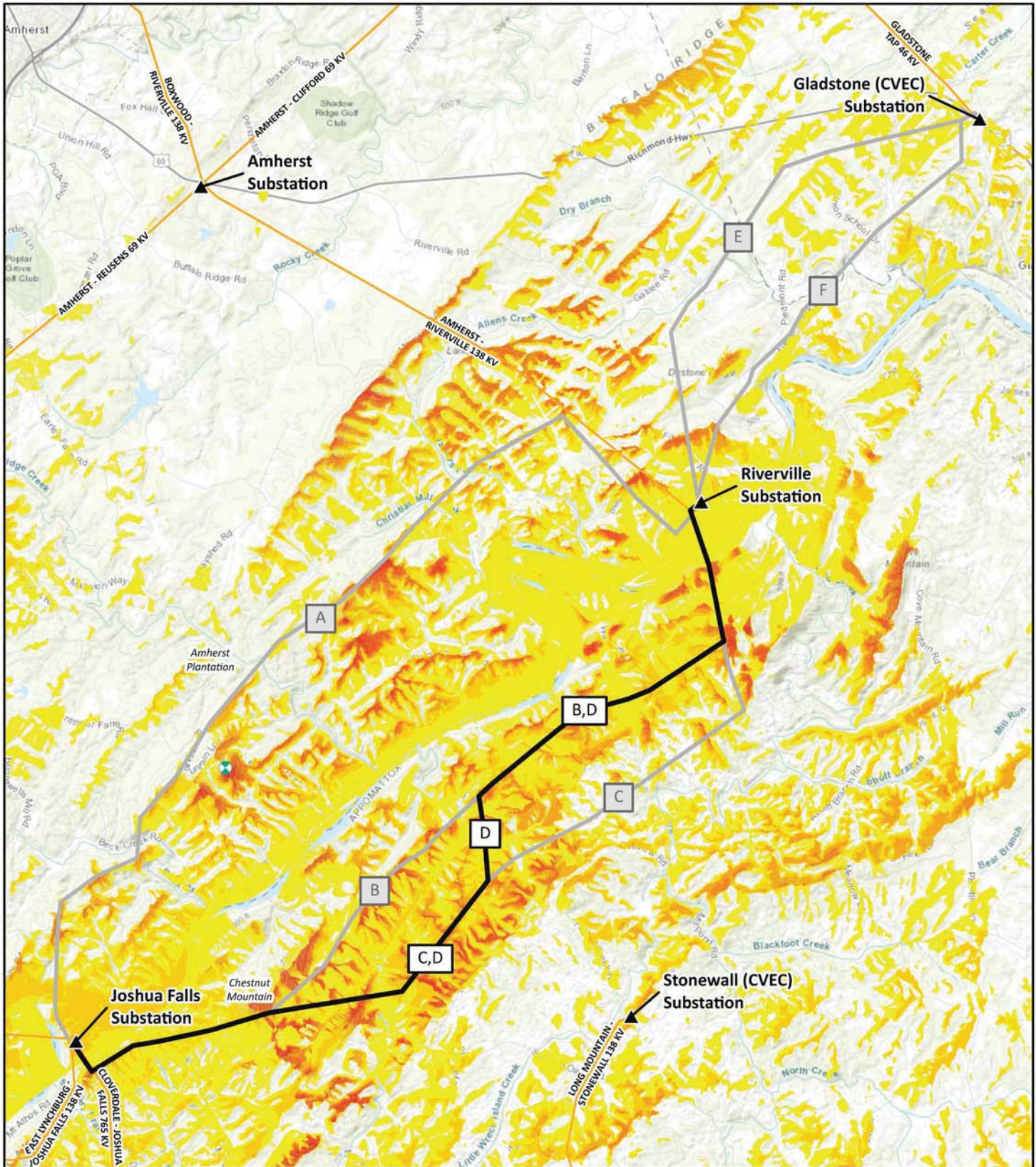


Map 15
Alternative Route C Viewshed
 Joshua Falls-Riverville-Gladstone 138 kV Transmission Line Component

APPALACHIAN POWER
 UNBUNDLED ENERGY

Central Virginia Transmission Reliability Project

0 1 2 Miles



Amherst, Appomattox, Campbell, and Nelson Counties
Virginia

NAD 1983 HARN State Plane
Virginia South FIPS 4502 Feet
Lambert Conformal Conic

November 23, 2020

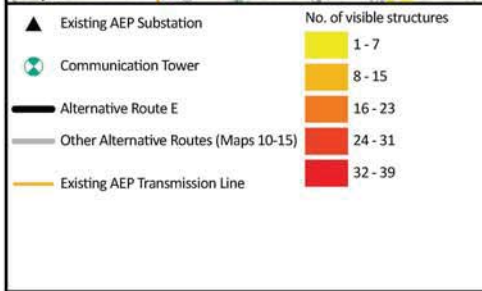
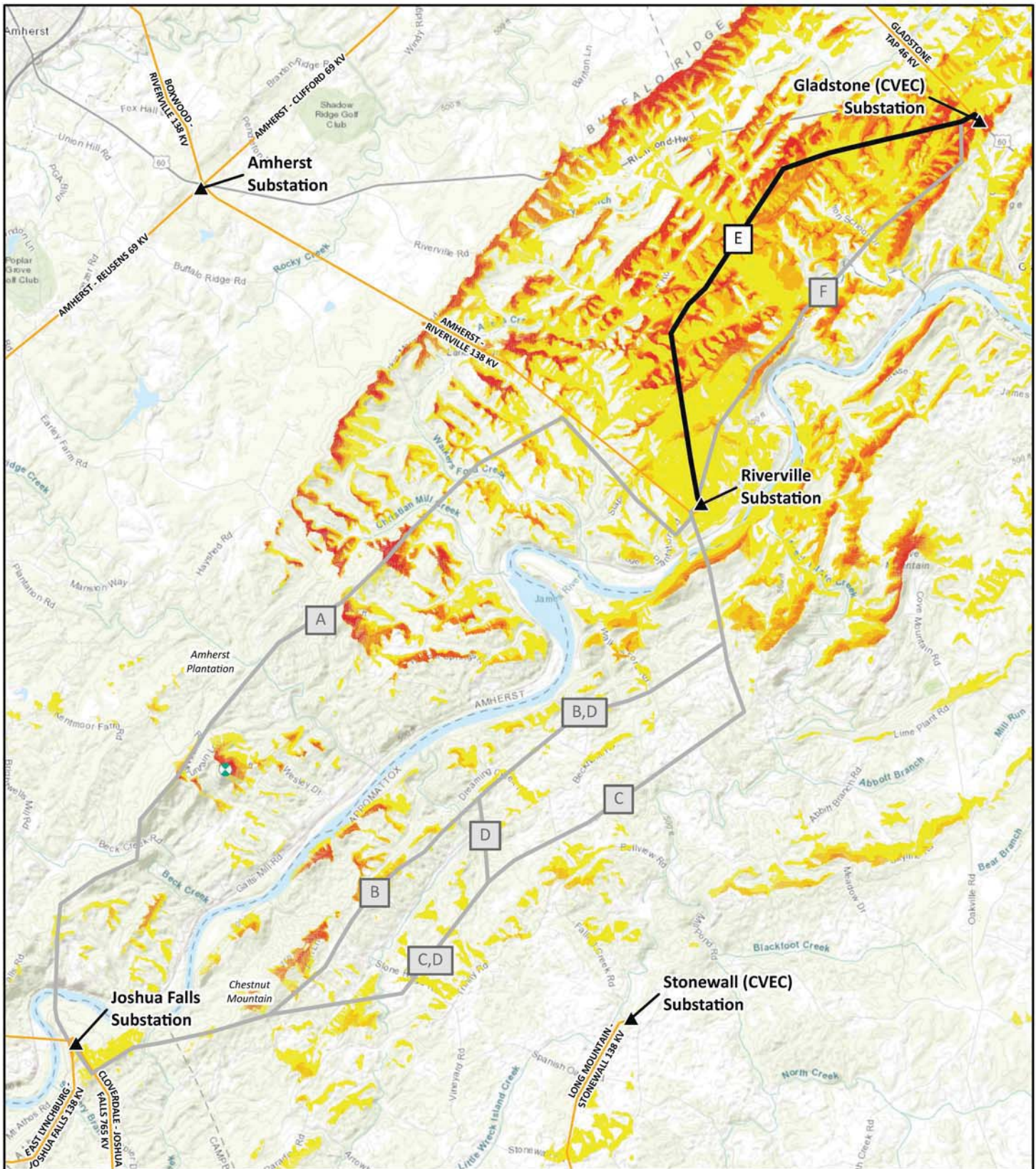


Map 16
Alternative Route D Viewshed
Joshua Falls-Riverville-Gladstone 138 kV
Transmission Line Component

APPALACHIAN POWER
UNDISRUPTED ENERGY

Central Virginia Transmission Reliability Project

0 1 2
Miles



Amherst, Appomattox,
Campbell, and Nelson Counties
Virginia

NAD 1983 HARN State Plane
Virginia South FIPS 4502 Feet
Lambert Conformal Conic

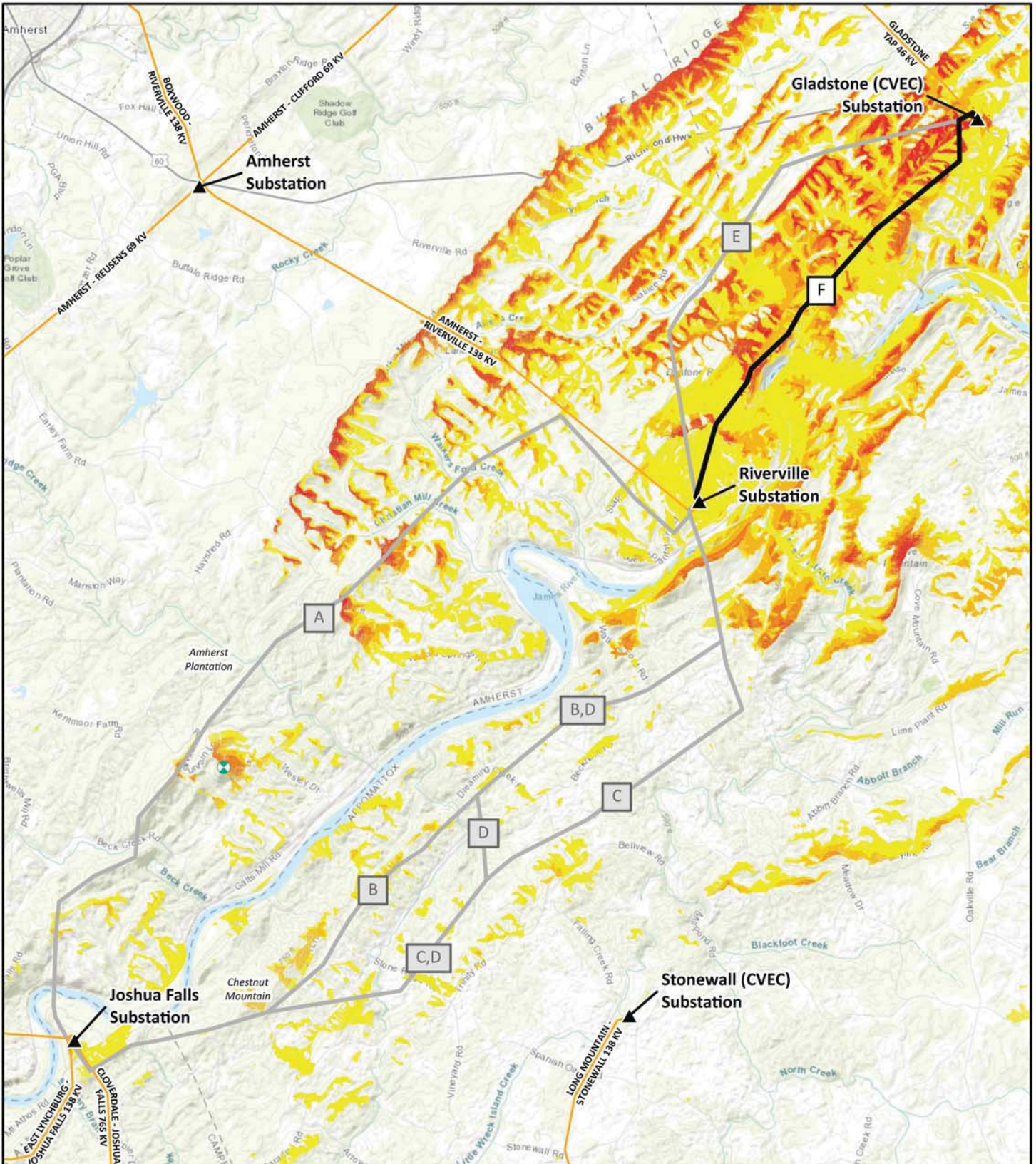
November 23, 2020



Map 17
Alternative Route E Viewshed
Joshua Falls-Riverville-Gladstone 138 kV
Transmission Line Component

Central Virginia Transmission Reliability Project

0 1 2
Miles



▲ Existing AEP Substation

📶 Communication Tower

— Alternative Route F

— Other Alternative Routes (Maps 10-15)

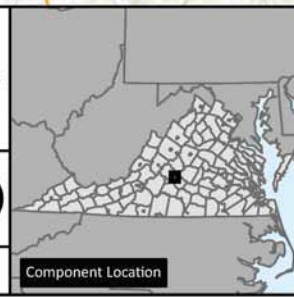
— Existing AEP Transmission Line

No. of visible structures
1 - 7
8 - 14
15 - 21
22 - 28
29 - 36

Amherst, Appomattox, Campbell, and Nelson Counties
Virginia

NAD 1983 HARN State Plane
Virginia South FIPS 4502 Feet
Lambert Conformal Conic

November 23, 2020



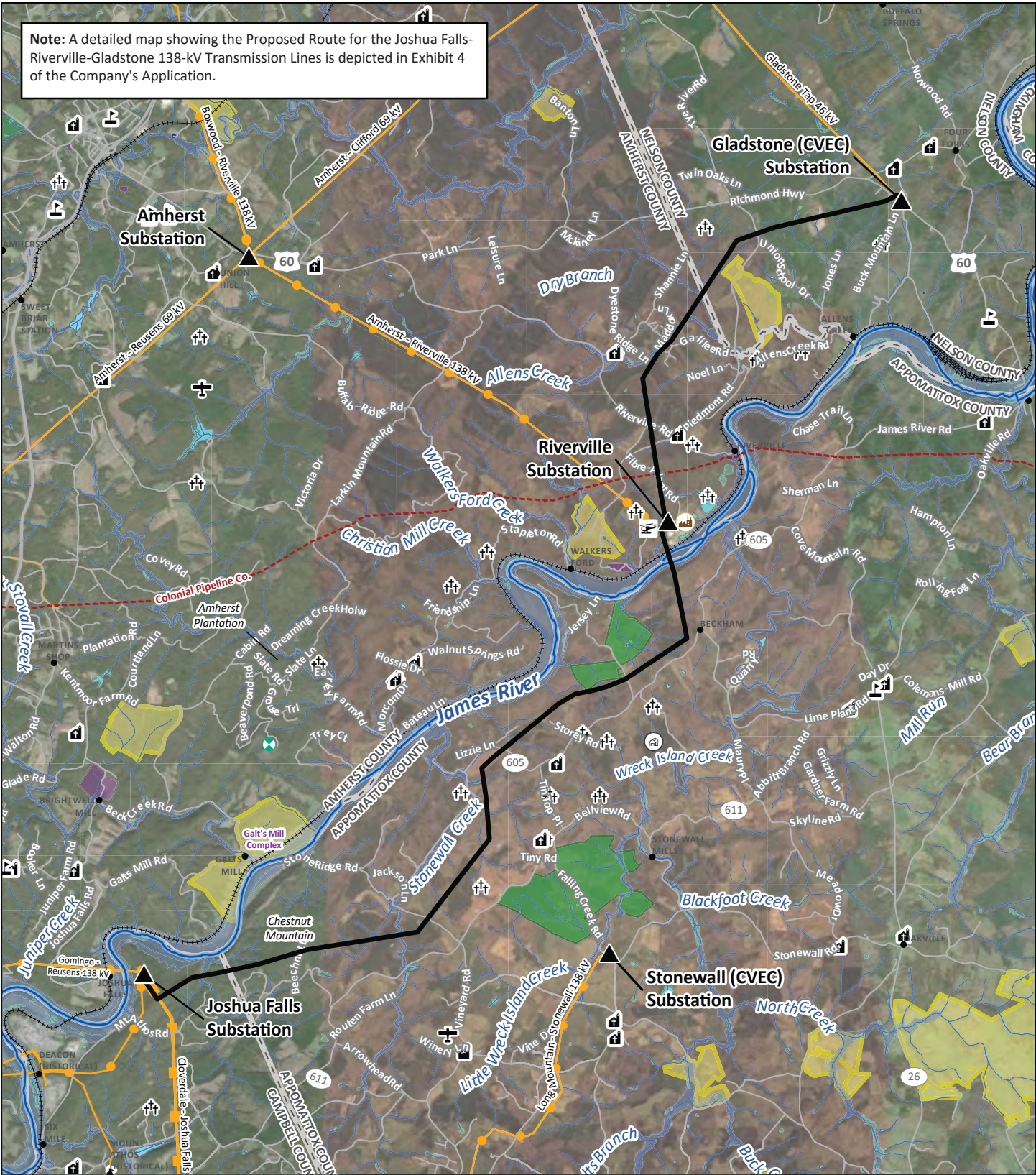
Map 18
Alternative Route F Viewshed
Joshua Falls-Riverville-Gladstone 138 kV
Transmission Line Component

APPALACHIAN POWER
RELIABLE ENERGY

Central Virginia Transmission Reliability Project

0 1 2
Miles

Note: A detailed map showing the Proposed Route for the Joshua Falls-Riverville-Gladstone 138-kV Transmission Lines is depicted in Exhibit 4 of the Company's Application.



- ▲ Existing Substation
- 138 kV Proposed Route
- 🏭 Greif Paper Mill
- 📶 Communication Tower
- Populated Place
- 🏠 Virginia Century Farm (VDACS)
- 🎓 School
- ⛪ Place of Worship
- ⚰ Cemetery
- ✈ Private Airstrip
- 🚁 Heliport
- Existing AEP Transmission Line (69 kV or lower)
- Existing AEP Transmission Line (115-230 kV)
- Existing AEP Transmission Line (345 kV+)
- Road
- Pipeline
- Railroad
- James River
- County Boundary
- Stream (NHD)
- Lake/Pond (NHD)
- Reservoir (NHD)
- Floodplain
- DOF Easement
- VOF Easement
- NRHP Listed Architectural Resources

Amherst, Appomattox,
Campbell, and Nelson Counties
Virginia

NAD 1983 HARN State Plane
Virginia South FIPS 4502 Feet
Lambert Conformal Conic



Map 19
Proposed Route
Joshua Falls-Riverville-Gladstone 138 kV
Transmission Lines Component

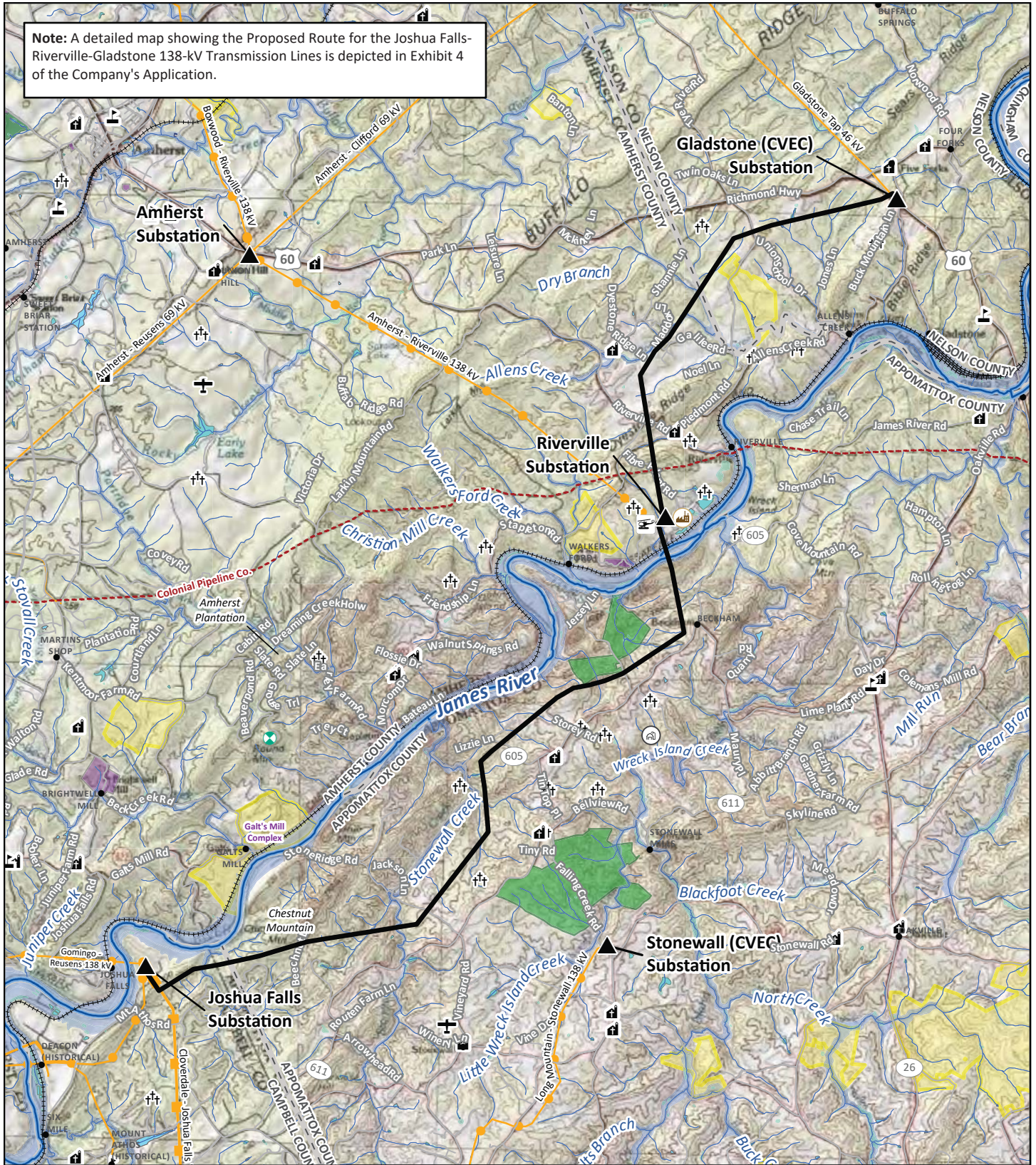
**Central Virginia Transmission
Reliability Project**

0 1 2 3
Miles

December 11, 2020

Component Location

Note: A detailed map showing the Proposed Route for the Joshua Falls-Riverville-Gladstone 138-kV Transmission Lines is depicted in Exhibit 4 of the Company's Application.





- ▲ Existing Substation
- 138 kV Proposed Routes
- Ⓜ Greif Paper Mill
- Ⓣ Communication Tower
- Populated Place
- Ⓞ Virginia Century Farm (VDACS)
- Ⓜ School
- Ⓜ Place of Worship
- Ⓜ Cemetery
- Ⓜ Private Airstrip
- Ⓜ Heliport
- Pipeline
- +++ Railroad
- James River
- Road
- Existing AEP Transmission Line (69 kV or lower)
- Existing AEP Transmission Line (115-230 kV)
- Existing AEP Transmission Line (345 kV +)
- County Boundary
- Stream (NHD)
- NWI Wetland
- Lake/Pond (NHD)
- Reservoir (NHD)
- Floodplain
- DOF Easement
- VOF Easement
- NRHP Listed Architectural Resources

Amherst, Appomattox,
Campbell, and Nelson Counties
Virginia

NAD 1983 HARN State Plane
Virginia South FIPS 4502 Feet
Lambert Conformal Conic


December 11, 2020



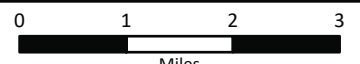


Component Location

Map 20
Proposed Route
Joshua Falls-Riverville-Gladstone 138 kV
Transmission Lines Component



Central Virginia Transmission
Reliability Project



0 1 2 3
Miles